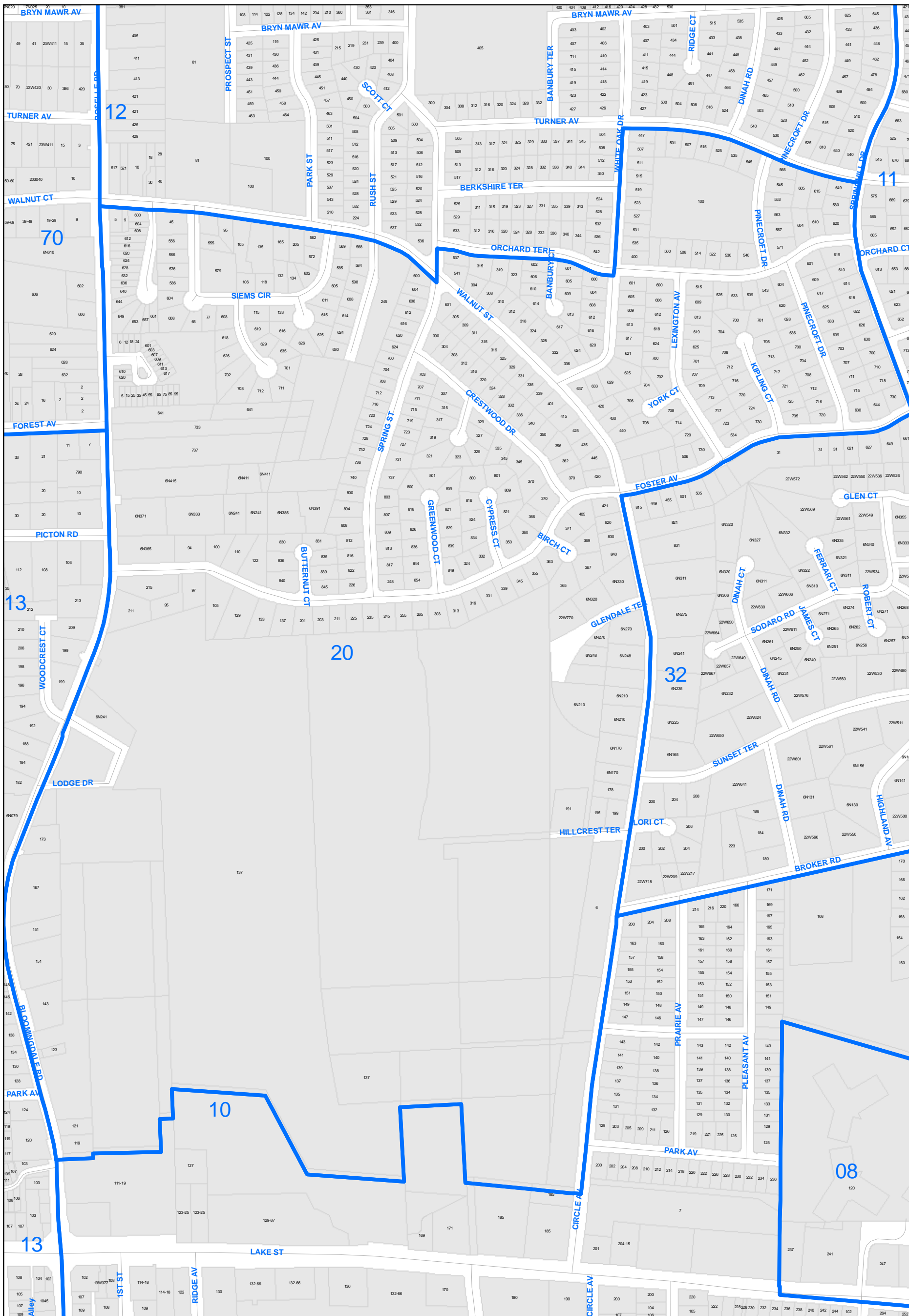


COMMISSIONERS

J.P. "RICK" CARNEY
Chairman
JEANNE McNAMARA
Vice Chairman
CHARLOTTE MUSHOW
Secretary

Bloomingtondale 20

ROBERT T. SAAR
Executive Director



Legend

- DuPage Precincts
- Parcels_2006



Sep 26, 2006

DuPage County Election Commission

DISCLAIMER: The accuracy of this map is limited to quality of data contained in other public records. This is not a substitute for an actual field survey or field investigation.